

The Climate Action Plan 5th Anniversary

State Agency Updates

Sherry Godlewski

NH Department of Environmental Services



Remember the Climate Action Plan?

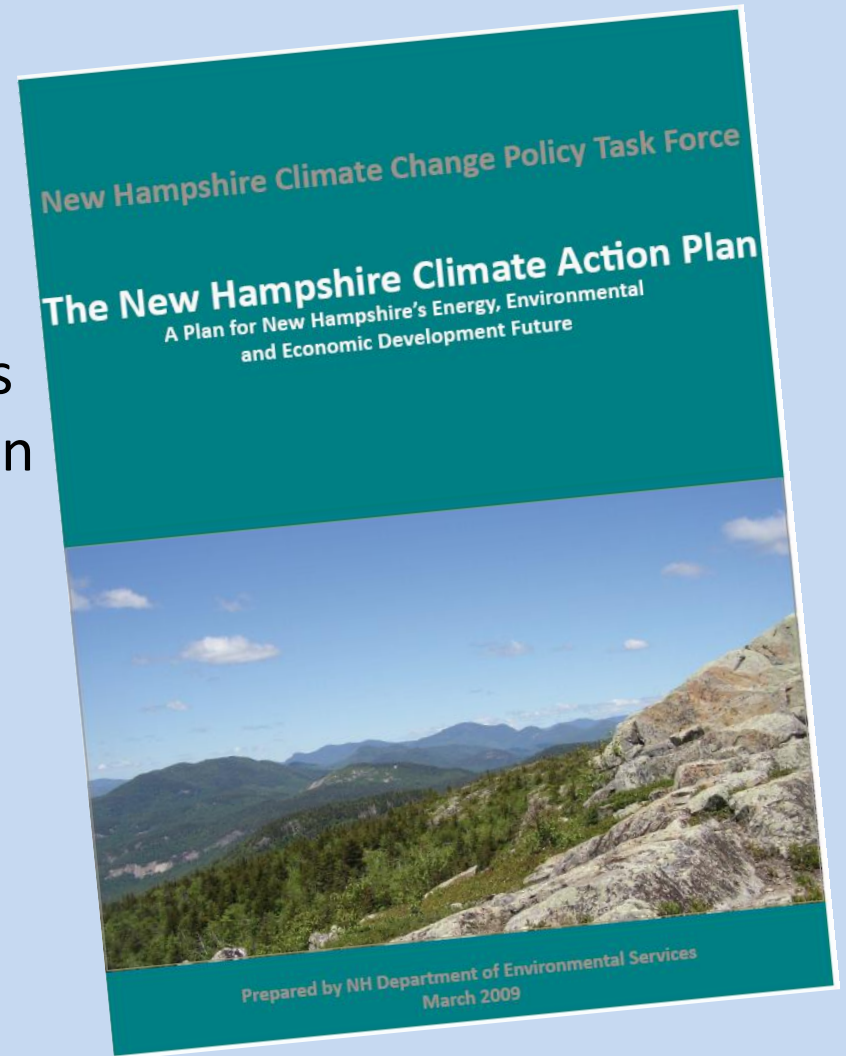
5 years old!

67 Recommendations

Implementation at multiple levels
with a high degree of coordination

Include flexibility, transparency
and communication

The Plan is in the people;
not the paper



Department of Environmental Services

- Department-wide Initiative
- Brain storming sessions with staff
- Assess our impacts, contribution and responses
- Cross program coordination
- Incorporate climate change into our programmatic functions
 - NRCC rainfall data
- Working with other agencies



DES Work Underway



THE STATE OF NEW HAMPSHIRE
DEPARTMENT OF ENVIRONMENTAL SERVICES
LAND RESOURCES MANAGEMENT
ALTERATION of TERRAIN BUREAU
29 Hazen Drive, PO Box 95, Concord, NH 03302-0095
Phone: (603) 271-2147 Fax: (603) 271-6588



Website: <http://des.nh.gov/organization/divisions/water/aot/index.htm>

For Permit Status: http://www2.des.state.nh.us/OneStop/Wastewater_Engineering_Site_Specific_Query.aspx

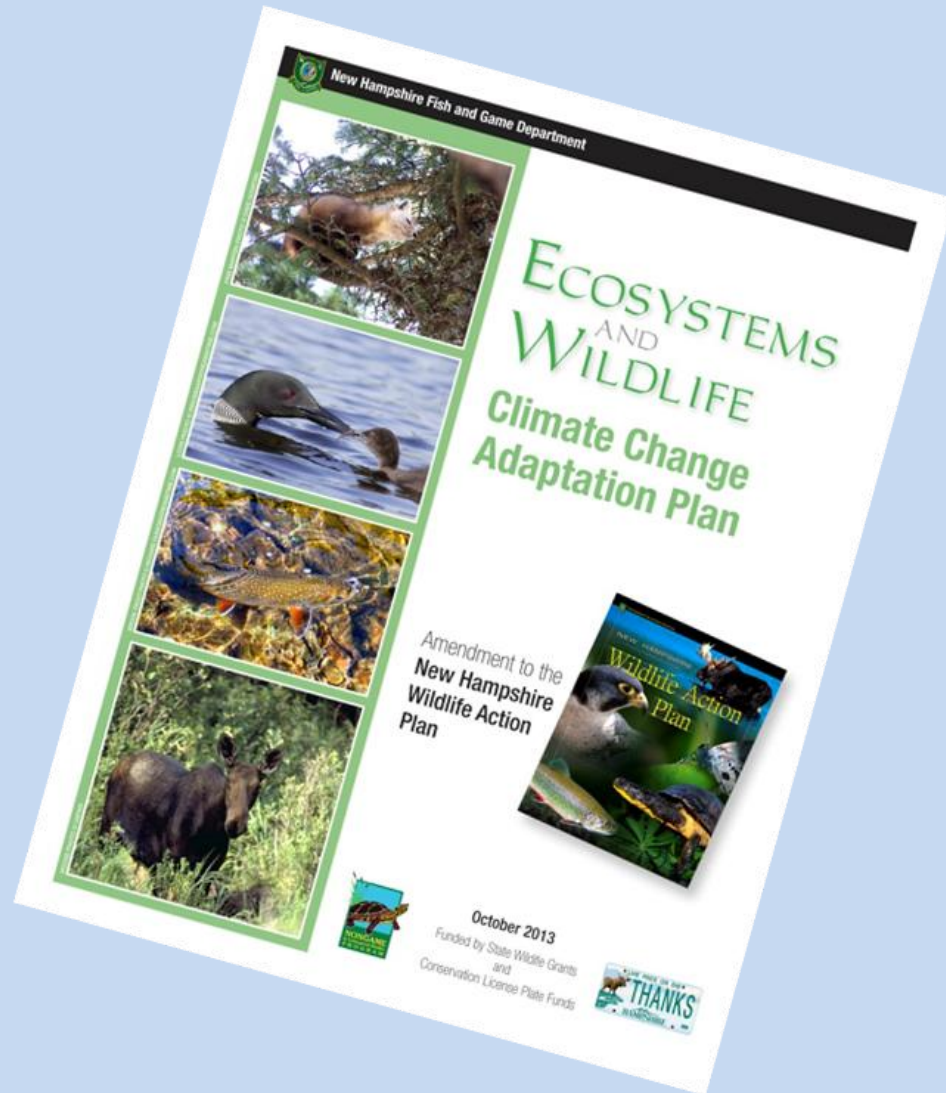
ALTERATION OF TERRAIN PERMIT APPLICATION

DRAINAGE ANALYSES

Please double-side 8 1/2" x 11" sheets where possible but, **do not** reduce the text such that more than one page fits on one side.

- PE stamp
- Rainfall amount obtained from the Northeast Regional Climate Center- <http://precip.eas.cornell.edu/>. Include extreme precipitation table as obtained from the above referenced website.
- Drainage analyses, in the following order:
 - Pre-development analysis: Drainage diagram
 - Pre-development analysis: Area Listing and Soil Listing
 - Pre-development analysis: Node listing 1-year (if applicable), 2-year, 10-year and 50-year
 - Pre-development analysis: Full summary of the 10-year storm
 - Post-development analysis: Drainage diagram
 - Post-development analysis: Area Listing and Soil Listing

NH Fish and Game



Released in 2013

Developed with input from a broad range of stakeholders

Assessments of each habitat in the state

Help communities and policy makers with planning

Department of Transportation

- How to respond to:
 - sometimes snow, sometimes flooding, sometimes drought
- Culvert sizing – NRCC rainfall data
- Road design & materials
 - Asphalt mixes - ↓ GHGs, ↑ recycled materials
 - Slope cuts, erosion, drainage, landscaping
- Road maintenance
 - invasive species, clearing culverts
- Open road tolling saved (Hampton & Hooksett)
455,000 hours of travel time and
742,000 gal of fuel per year!



Health and Human Services

Grant from the Centers for Disease Control

Building Resilience Against Climate Effects (BRACE)

- assess vulnerabilities
- project disease burden
 - heat & vector borne diseases
- assess public health interventions
- develop adaptation plans



Working Together



Maximize use of limited resources

State level coordination

Explore co-benefits

Continue to lead by example

Continue to Implement the Climate Action Plan

